



HOBART WRAPPING SYSTEMS



Make every package a reflection of the excellence you put inside.



Meet the Essential wrapper, the weigh-wrap family's newest member.

> > > Hobart is committed to providing the right wrapping equipment, plus the best prepared and *only* factory-trained service organization in the industry to make your store shine. That's why we polled nearly half the grocers in the United States, asking what features you wanted, what features you needed and what you could live without on a wrapping system. With that data, Hobart has created the newest member of the Hobart weigh-wrap family, the Essential Automatic Wrapping System.

No two meat-room operations are the same, but the Essential Automatic Wrapping System, the Access Automatic Wrapping System and the Hand-Wrap Station complete the series that ensures Hobart has a wrapping solution for every need.




Exactly what you

## Seal in the quality.


Buying fresh, high-quality meat from a reputable grocer is an experience most people enjoy, but a less-than-perfect seal can ruin that experience in a moment. That's why the Hobart family of wrappers puts the emphasis on producing tightly sealed packages that won't leak when a customer picks them up or soil your meat case.

### High performance.

- 40" sealer belt—provides the best seal in their class
- High throughput speeds—20 per minute on the Essential wrapper and 30 per minute on the Access wrapper
- Large and open intake area accelerates package loading
- Accept largest trays in their class—10" x 16" on the Access wrapper and 10" x 15" or 25D on the Essential wrapper
- Four-way film stretch makes a crystal-clear, wrinkle-free wrap



> 40-inch belt ensures a tight wrap and seal.

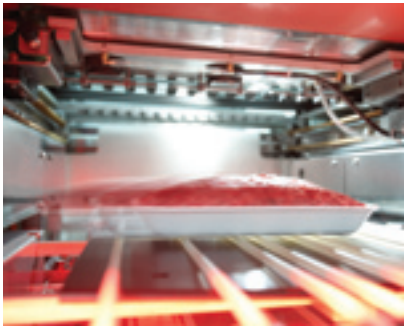


> Four-way film stretch produces flawless, wrinkle-free package presentation.

need.



Backed by a legacy of durability.



> **Made in the USA** and held to Hobart's strict standards for quality and durability.

The goal of every Hobart machine is to support your operation and enable you to produce the best product you can. We know that equipment downtime can bring the best meat room to a costly standstill. The Hobart family of wrappers is designed to keep you up and running. We've put all of our wrappers through rigorous testing to ensure they are the best they can be.

**Factory-trained service.** Plus, we back up all of our equipment with the *only* factory-trained and dedicated service organization in the industry. Our service team prides itself on its expert knowledge of Hobart equipment. When something does need attention, whether it's routine maintenance or an emergency, it's the service team's sole purpose to get you operational again with minimal interruption to your production.

**Service contracts.** And, as always, we offer service contracts to ensure your wrapper is maintained properly, leading to a smooth-running operation.



> **Dedicated service personnel** respond quickly to problems.

service & support

## Operation without complications.

At Hobart, our goal is to produce equipment that supports your operation and doesn't hold you back. That's why we designed our automatic wrappers to be easy to use from day one.

### Easy to use.

- Easy to operate—intuitive color touch-screen display guides you through the process of use
- Simple item search—search by product name or PLU
- Packages auto-center—packages don't contact side walls, minimizing contamination risk
- Two-roll film efficiency—Access wrapper lowers film cost by selecting optimum film size for each tray
- Simplified film ordering—Essential and Access wrappers can use the same film gauge and width as the Hand-Wrap Station
- Film flexibility—use film from 50 to 100 gauge and from 13" wide to 20" wide
- Easy to clean—simply wipe down the Essential or spray down the Access wrapper



> A large 10.4-inch LCD color touch screen makes fonts easier to read for faster operation.



> Easy-open doors protect film and make loading simple.



> Packages automatically centered to increase food safety.



Labels you'll be proud to have your name on.



> Precise label placement enhances presentation.



> Optional second printer saves money on preprinted "special" labels.

The perfect final touch on a beautifully wrapped package is an eye-catching label. Hobart's wrappers come with high-quality label printers that enable you to use any preprinted label stock to promote your products.

#### Simplified labeling.

- More room for merchandising—high-resolution thermal printer produces smaller bar codes
- Optional second integrated printer—promote specials unique to each PLU (for example, Great for the Grill!)
- Automatic and precise label placement
- Access wrapper autorotates the labels to provide merchandising flexibility
- Essential wrapper's manual label rotation is simple—just select the orientation on the touch screen and flip a switch
- Semiautomatic versions available with manual label placement



## Which wrapper is right for you?



	ACCESS WRAPPER	ESSENTIAL WRAPPER	HAND WRAPPER
Cleaning	Hose down/wipe down	Wipe down	Wipe down
Sealer Belt	40"	40"	14" W x 6" D Hot Plate
Label Placement	Automatic	Automatic	Manual
Label Rotation	Automatic	Manual	Manual
Maximum Tray Size	10" L x 16" W x 6" H	10" L x 15" W x 6" H	Largest trays and packages
Throughput Speed	30ppm	20ppm	NA
Film Rolls	2	1	2
Printers	1 or 2 (optional)	1	1
Footprint	43" W x 97" D	43" W x 97" D	52" W x 31" D

The Essential Automatic Wrapping System has all the features and capacity that most grocers need, and we're proud to offer it. For everyone else, Hobart still offers the Access Automatic Wrapping System, with its increased throughput speed and optimal film efficiency, and the Hand-Wrap Station, with its simple and reliable operation for smaller volume applications. We're confident that we have the wrapping system to support your operation.

unparalleled quality



**Food Retail's #1 supporter.** Hobart, where equipment and service join together in support of you. Hobart makes a full line of equipment for the food retail industry, including cooking, food machines, warewashers, Traulsen refrigeration and Baxter baking. We support our customers when and where it counts the most. In the field, at your place. With nearly 200 locations and 1,700 factory-trained service representatives across the country, we're always close by to install, maintain and service your equipment. If that's the kind of support network you've been looking for, contact your Hobart representative today by calling 888-4HOBART.



Proud supporter of you.™

701 South Ridge Avenue  
Troy, Ohio 45374-0001

937 332-3000  
888 4HOBART  
888 446-2278  
[www.hobartcorp.com](http://www.hobartcorp.com)